

# PREMIUM SUITE PLAN A

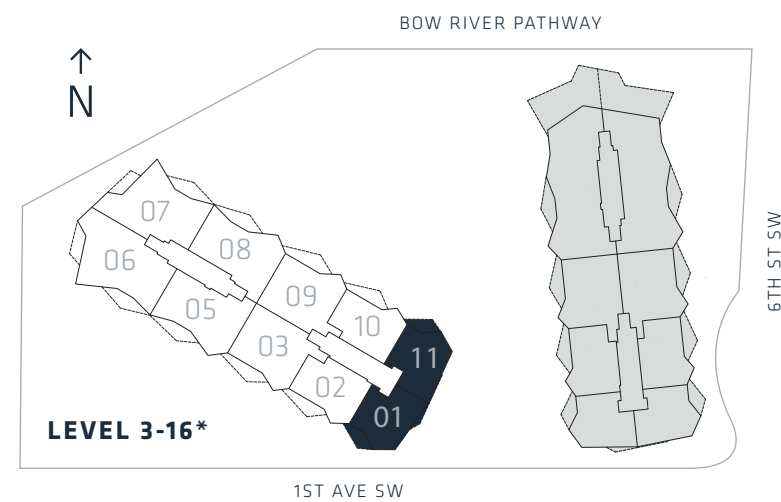
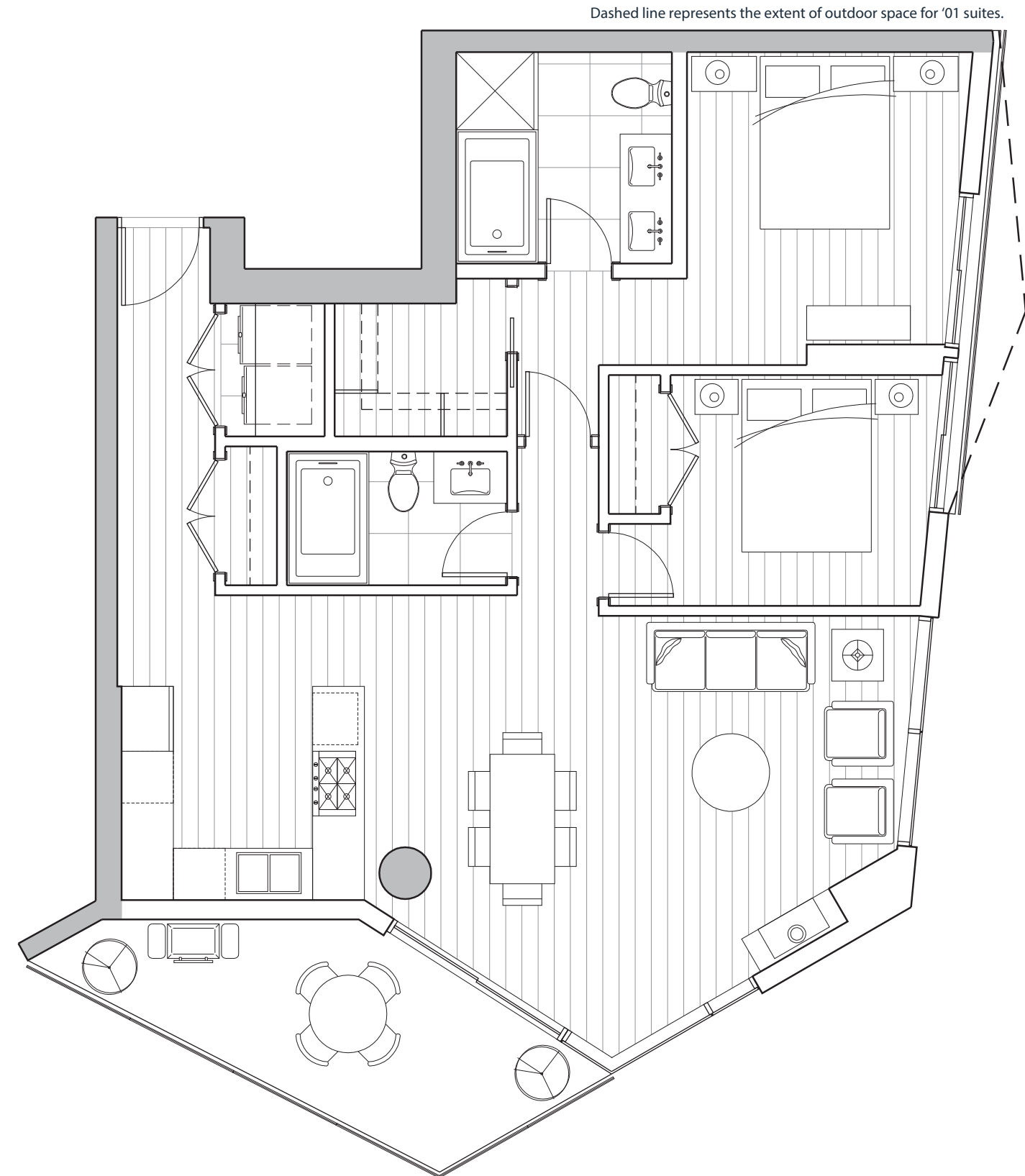
## 2 BEDROOM

### SUITE '01:

ENCLOSED AREA	OUTDOOR SPACE	TOTAL AREA
1,060 SF	147 SF	1,207 SF

### SUITE '11:

ENCLOSED AREA	OUTDOOR SPACE	TOTAL AREA
1,060 SF	122 SF	1,182 SF



Actual suite plan may have minor variations from or be shown as mirror image of the typical plan shown.  
\*Keyplan and suite number will vary between levels 11-16

Developer reserves the right to make modifications and changes to features and finishes, brands, colours, materials, building design, specifications, ceiling heights, flooring patterns and floorplans without notification. Suite sizes are computed from the outside face of exterior walls, from the outside face of walls adjacent to common areas and to the centreline of walls common to other suites. Measurements for exterior balconies and terraces are computed from the outside face of exterior walls to the slab edges of the outside face of parapets. Window and mullion configurations may vary depending on floor. Actual suite plan may have minor variations from or be shown as a mirror image of the typical plan shown. All illustrations including but not limited to suite and amenity interiors, exteriors and views reflect the artist's interpretation of the project and do not take into account the neighbouring buildings, physical structures, streets and landscape. These matters will be governed entirely by the terms of the applicable disclosure documents and purchaser contract in each case. This is not an offering for sale any such offering can only be made with the applicable disclosure documents and offer to purchase and agreement of sale. The Concord Limited Partnership. E6QE

# PREMIUM SUITE PLAN B

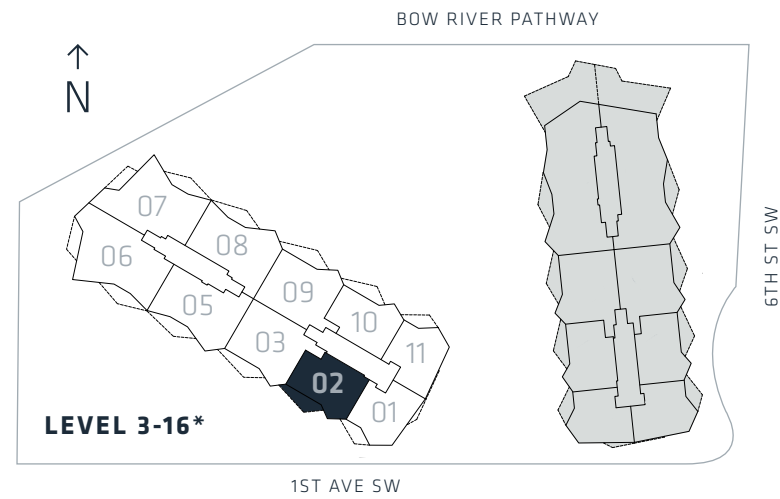
## 2 BEDROOM

### SUITE '02:

ENCLOSED AREA	OUTDOOR SPACE	TOTAL AREA
1,127 SF	165 SF	1,292 SF

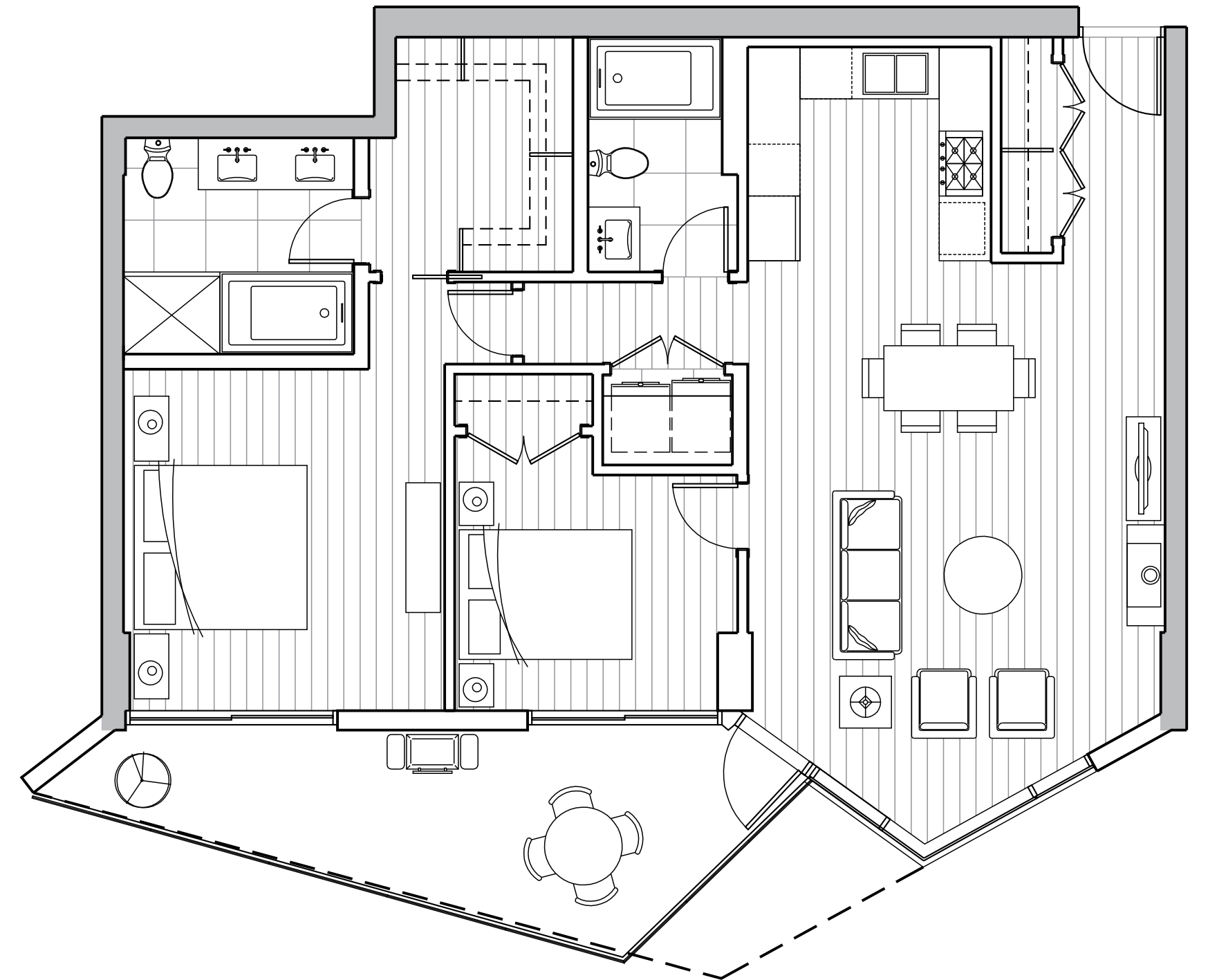
### SUITE 302:

ENCLOSED AREA	OUTDOOR SPACE	TOTAL AREA
1,127 SF	200 SF	1,327 SF



\*Keyplan will vary between levels 11-16

Developer reserves the right to make modifications and changes to features and finishes, brands, colours, materials, building design, specifications, ceiling heights, flooring patterns and floorplans without notification. Suite sizes are computed from the outside face of exterior walls, from the outside face of walls adjacent to common areas and to the centreline of walls common to other suites. Measurements for exterior balconies and terraces are computed from the outside face of exterior walls to the slab edges of the outside face of parapets. Window and mullion configurations may vary depending on floor. Actual suite plan may have minor variations from or be shown as a mirror image of the typical plan shown. All illustrations including but not limited to suite and amenity interiors, exteriors and views reflect the artist's interpretation of the project and do not take into account the neighbouring buildings, physical structures, streets and landscape. These matters will be governed entirely by the terms of the applicable disclosure documents and purchaser contract in each case. This is not an offering for sale any such offering can only be made with the applicable disclosure documents and offer to purchase and agreement of sale. The Concord Limited Partnership. E&QE

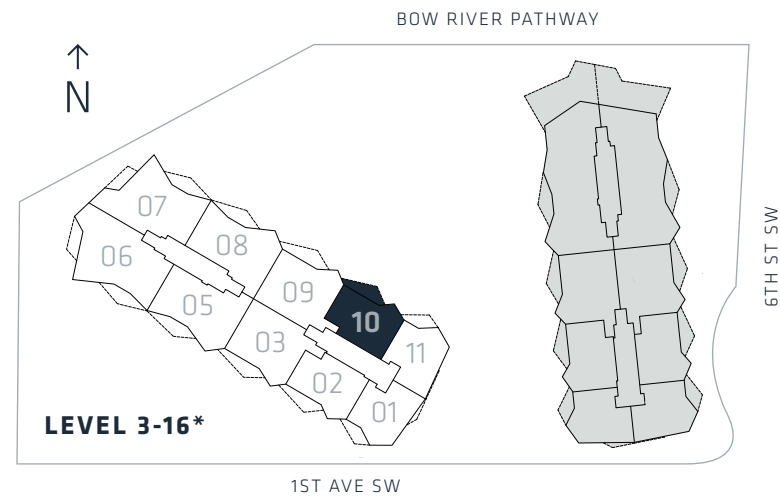


Dashed line represents the extent of outdoor space for suite 302 only.

# PREMIUM SUITE PLAN B1

**2 BEDROOM**

ENCLOSED AREA	OUTDOOR SPACE	TOTAL AREA
1,103 SF	165 SF	1,268 SF



\*Keyplan and suite number will vary between levels 11-16



Developer reserves the right to make modifications and changes to features and finishes, brands, colours, materials, building design, specifications, ceiling heights, flooring patterns and floorplans without notification. Suite sizes are computed from the outside face of exterior walls, from the outside face of walls adjacent to common areas and to the centreline of walls common to other suites. Measurements for exterior balconies and terraces are computed from the outside face of exterior walls to the slab edges of the outside face of parapets. Window and mullion configurations may vary depending on floor. Actual suite plan may have minor variations from or be shown as a mirror image of the typical plan shown. All illustrations including but not limited to suite and amenity interiors, exteriors and views reflect the artist's interpretation of the project and do not take into account the neighbouring buildings, physical structures, streets and landscape. These matters will be governed entirely by the terms of the applicable disclosure documents and purchaser contract in each case. This is not an offering for sale any such offering can only be made with the applicable disclosure documents and offer to purchase and agreement of sale. The Concord Limited Partnership. E&QE

# PRIVATE RESIDENCE PLAN C

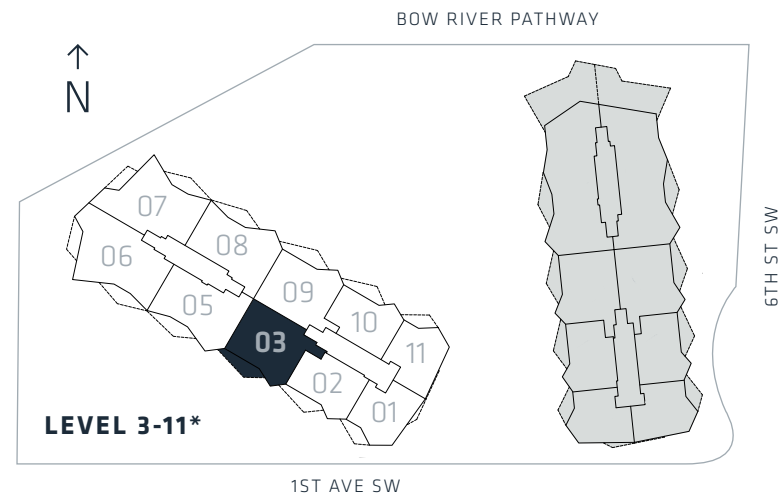
2 BEDROOM & DEN

## SUITE '03:

ENCLOSED AREA	OUTDOOR SPACE	TOTAL AREA
1,496 SF	177 SF	1,673 SF

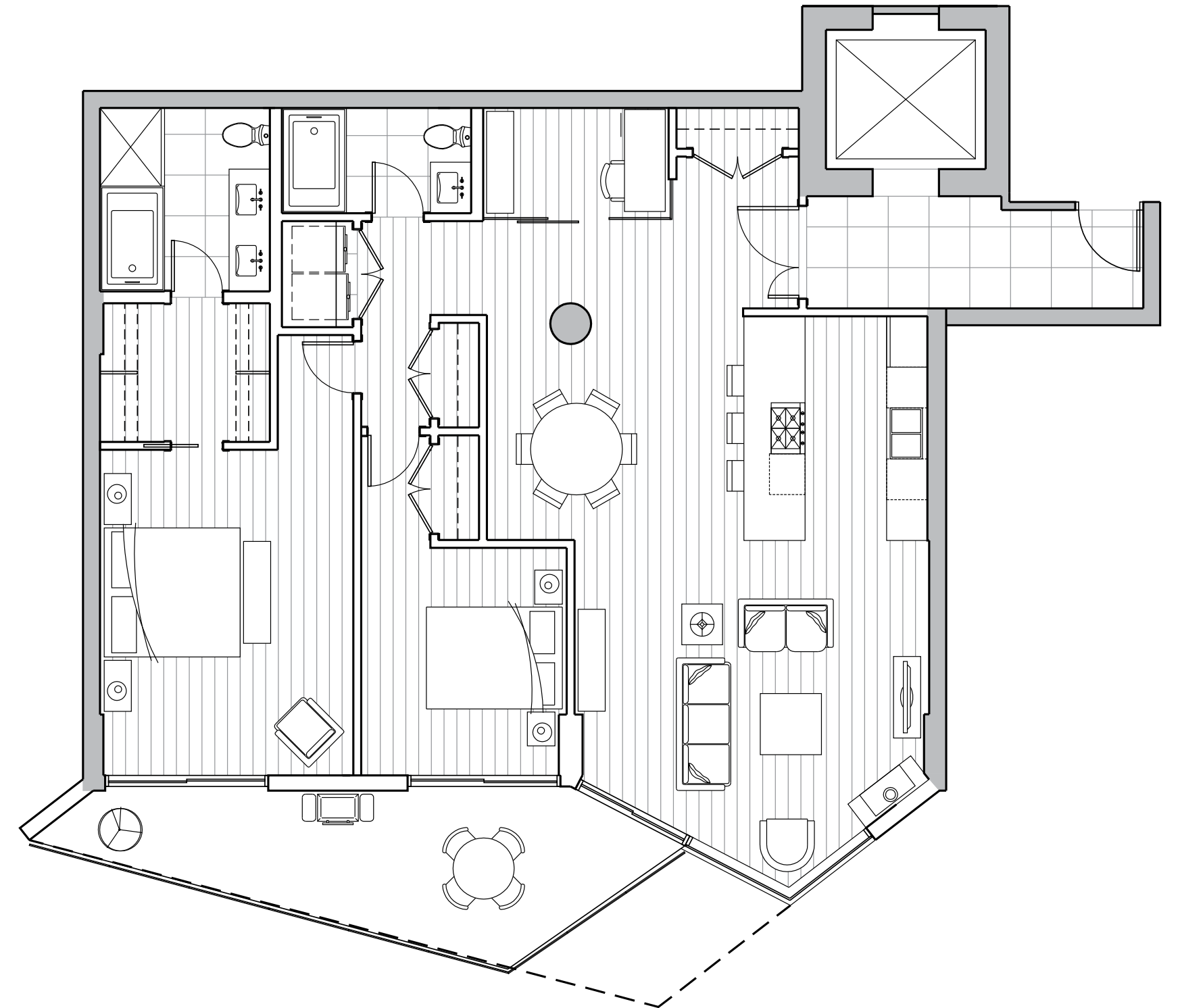
## SUITE 303:

ENCLOSED AREA	OUTDOOR SPACE	TOTAL AREA
1,496 SF	227 SF	1,723 SF



\*Keyplan will vary on level 11

Developer reserves the right to make modifications and changes to features and finishes, brands, colours, materials, building design, specifications, ceiling heights, flooring patterns and floorplans without notification. Suite sizes are computed from the outside face of exterior walls, from the outside face of walls adjacent to common areas and to the centreline of walls common to other suites. Measurements for exterior balconies and terraces are computed from the outside face of exterior walls to the slab edges of the outside face of parapets. Window and mullion configurations may vary depending on floor. Actual suite plan may have minor variations from or be shown as a mirror image of the typical plan shown. All illustrations including but not limited to suite and amenity interiors, exteriors and views reflect the artist's interpretation of the project and do not take into account the neighbouring buildings, physical structures, streets and landscape. These matters will be governed entirely by the terms of the applicable disclosure documents and purchaser contract in each case. This is not an offering for sale any such offering can only be made with the applicable disclosure documents and offer to purchase and agreement of sale. The Concord Limited Partnership. E&QE

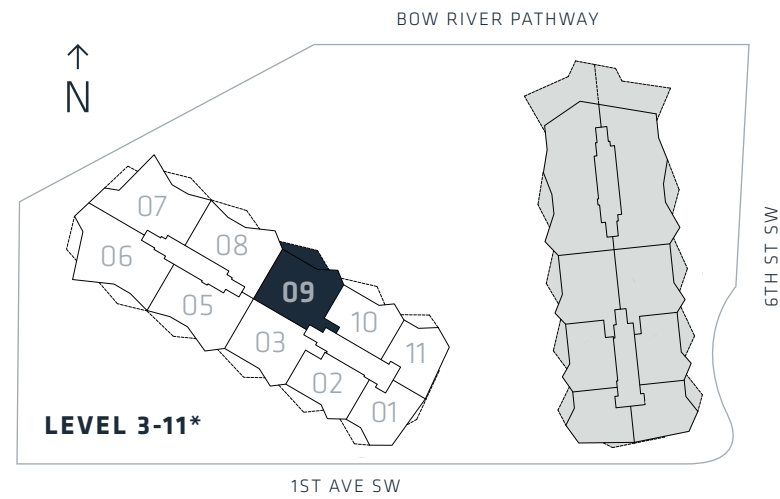


Dashed line represents the extent of outdoor space for suite 303 only.

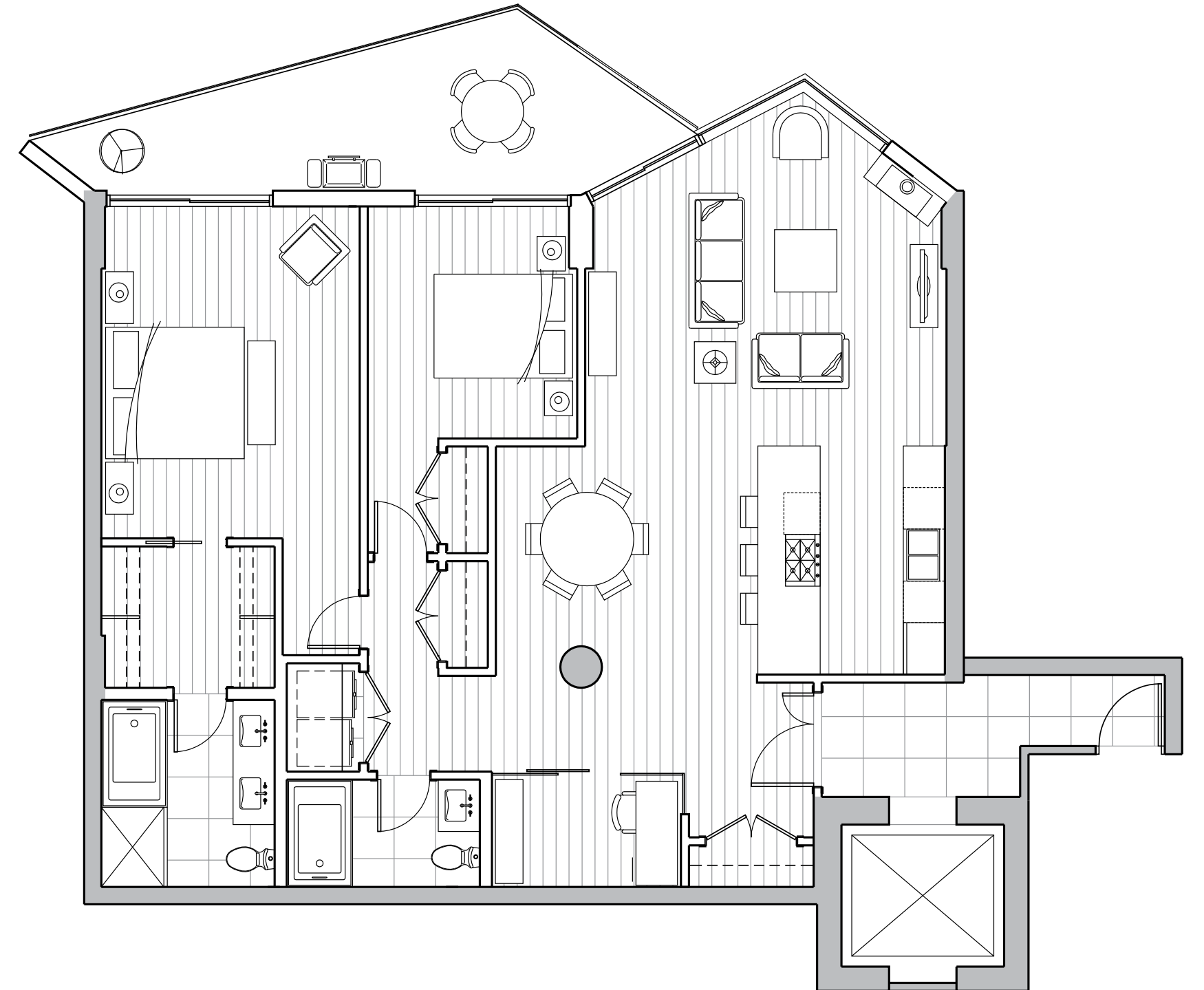
# PRIVATE RESIDENCE PLAN C1

**2 BEDROOM & DEN**

ENCLOSED AREA	OUTDOOR SPACE	TOTAL AREA
1,486 SF	177 SF	1,663 SF



\*Keyplan and suite number will vary on level 11



Developer reserves the right to make modifications and changes to features and finishes, brands, colours, materials, building design, specifications, ceiling heights, flooring patterns and floorplans without notification. Suite sizes are computed from the outside face of exterior walls, from the outside face of walls adjacent to common areas and to the centreline of walls common to other suites. Measurements for exterior balconies and terraces are computed from the outside face of exterior walls to the slab edges of the outside face of parapets. Window and mullion configurations may vary depending on floor. Actual suite plan may have minor variations from or be shown as a mirror image of the typical plan shown. All illustrations including but not limited to suite and amenity interiors, exteriors and views reflect the artist's interpretation of the project and do not take into account the neighbouring buildings, physical structures, streets and landscape. These matters will be governed entirely by the terms of the applicable disclosure documents and purchaser contract in each case. This is not an offering for sale any such offering can only be made with the applicable disclosure documents and offer to purchase and agreement of sale. The Concord Limited Partnership. E&QE

# PRIVATE RESIDENCE PLAN D1

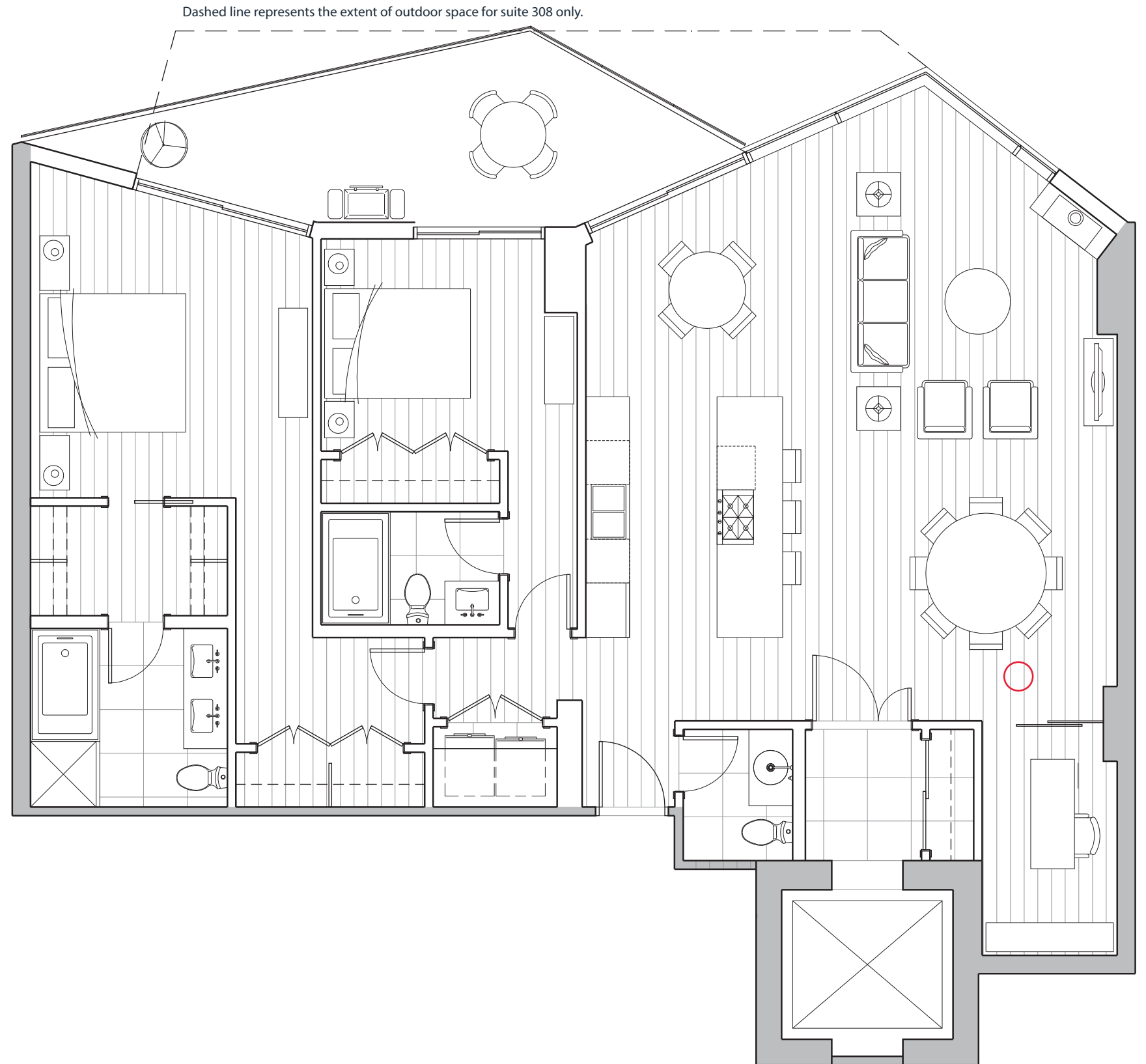
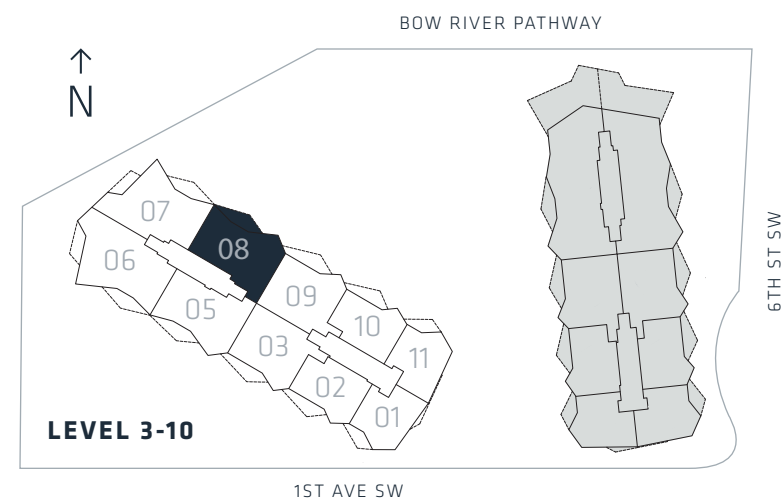
**2 BEDROOM, DEN & NOOK**

**SUITE '08:**

ENCLOSED AREA	OUTDOOR SPACE	TOTAL AREA
1,568 SF	171 SF	1,739 SF

**SUITE 308:**

ENCLOSED AREA	OUTDOOR SPACE	TOTAL AREA
1,568 SF	249 SF	1,817 SF



Developer reserves the right to make modifications and changes to features and finishes, brands, colours, materials, building design, specifications, ceiling heights, flooring patterns and floorplans without notification. Suite sizes are computed from the outside face of exterior walls, from the outside face of walls adjacent to common areas and to the centreline of walls common to other suites. Measurements for exterior balconies and terraces are computed from the outside face of exterior walls to the slab edges of the outside face of parapets. Window and mullion configurations may vary depending on floor. Actual suite plan may have minor variations from or be shown as a mirror image of the typical plan shown. All illustrations including but not limited to suite and amenity interiors, exteriors and views reflect the artist's interpretation of the project and do not take into account the neighbouring buildings, physical structures, streets and landscape. These matters will be governed entirely by the terms of the applicable disclosure documents and purchaser contract in each case. This is not an offering for sale any such offering can only be made with the applicable disclosure documents and offer to purchase and agreement of sale. The Concord Limited Partnership. E6QE

# PRIVATE RESIDENCE PLAN E

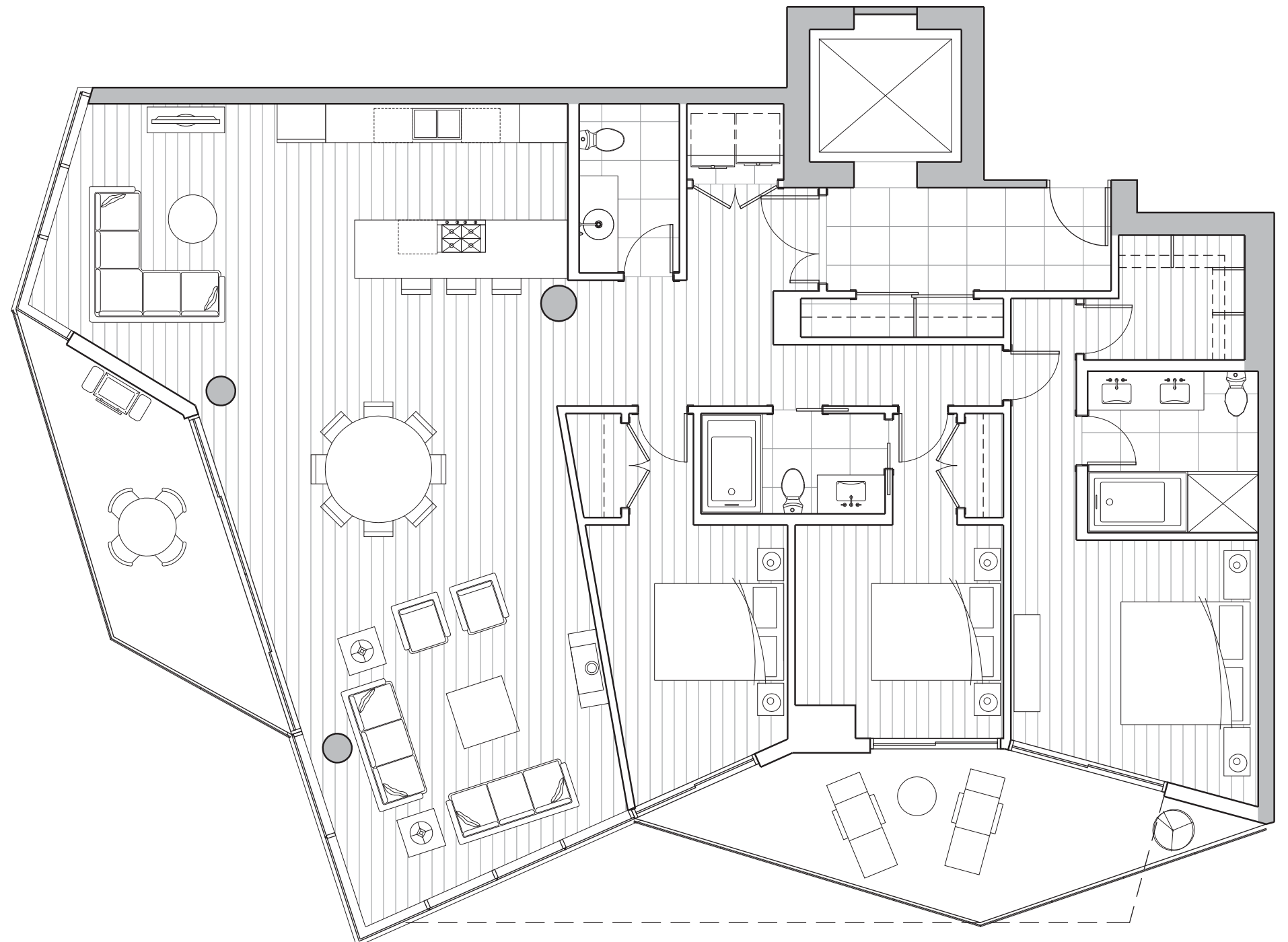
## 3 BEDROOM & FAMILY ROOM

### SUITE '06:

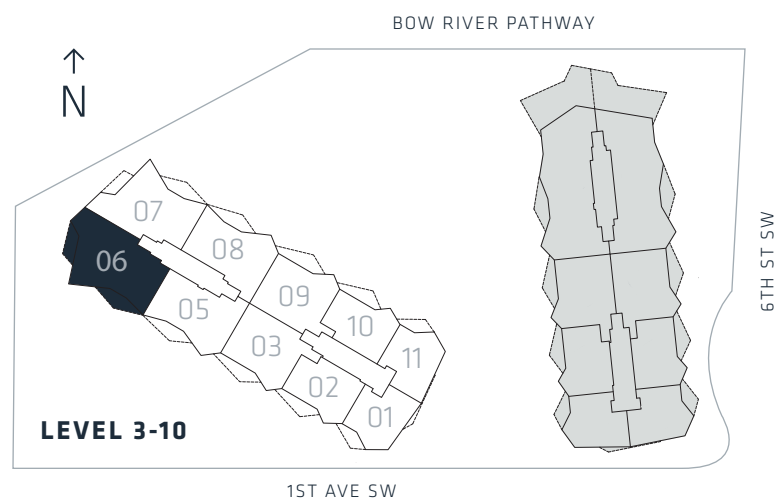
ENCLOSED AREA	OUTDOOR SPACE	TOTAL AREA
1,977 SF	300 SF	2,277 SF

### SUITE 306:

ENCLOSED AREA	OUTDOOR SPACE	TOTAL AREA
1,977 SF	369 SF	2,346 SF



Dashed line represents the extent of outdoor space for suite 306 only.



# PRIVATE RESIDENCE PLAN E1

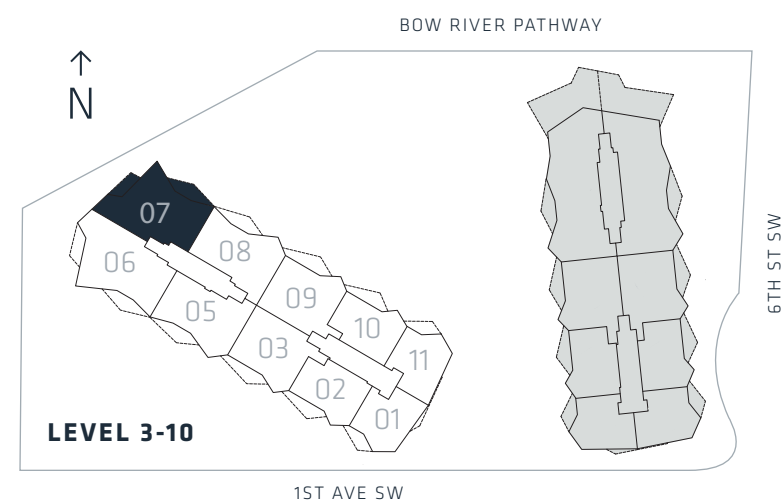
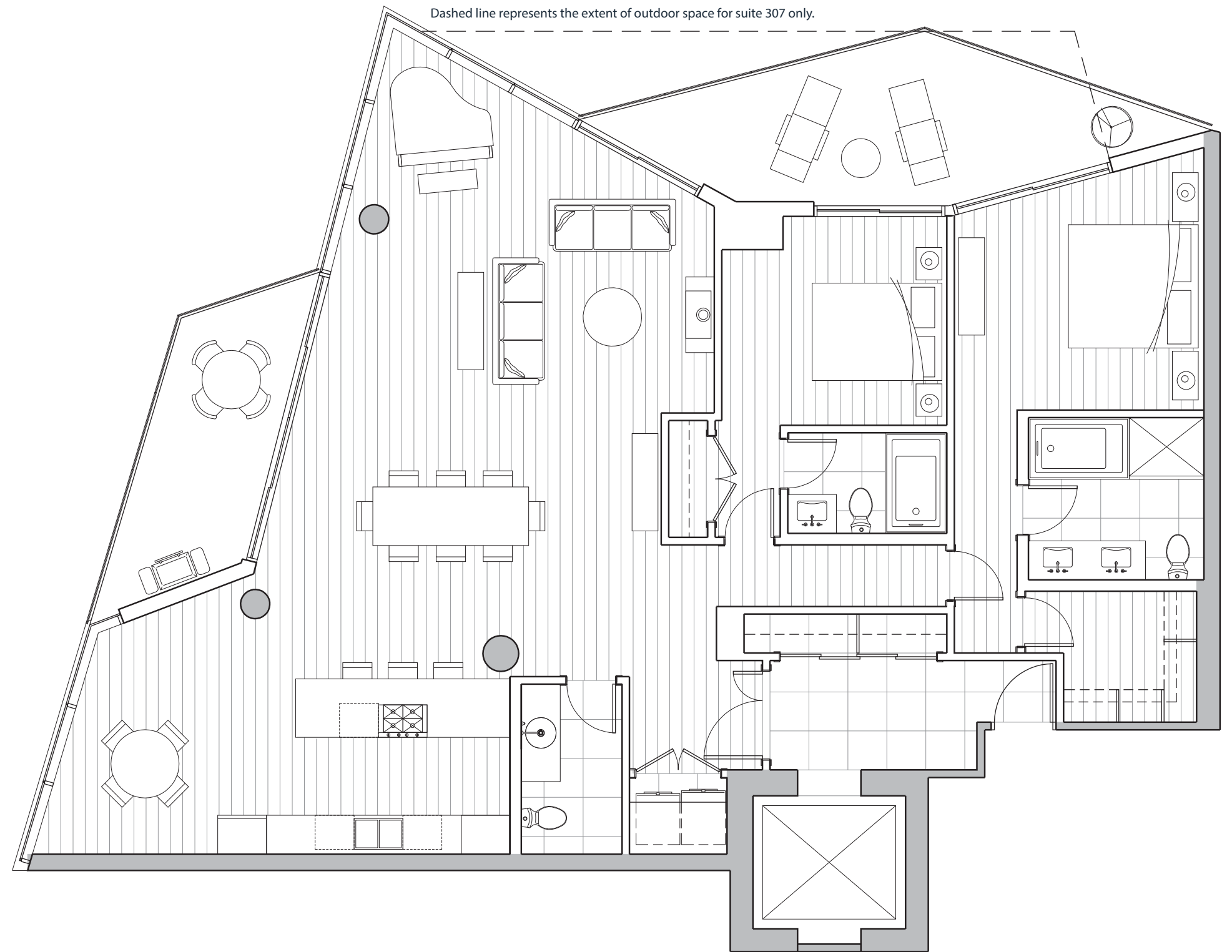
**2 BEDROOM & NOOK**

**SUITE '07:**

ENCLOSED AREA	OUTDOOR SPACE	TOTAL AREA
1,769 SF	282 SF	2,051 SF

**SUITE 307:**

ENCLOSED AREA	OUTDOOR SPACE	TOTAL AREA
1,769 SF	332 SF	2,101 SF



Developer reserves the right to make modifications and changes to features and finishes, brands, colours, materials, building design, specifications, ceiling heights, flooring patterns and floorplans without notification. Suite sizes are computed from the outside face of exterior walls, from the outside face of walls adjacent to common areas and to the centreline of walls common to other suites. Measurements for exterior balconies and terraces are computed from the outside face of exterior walls to the slab edges of the outside face of parapets. Window and mullion configurations may vary depending on floor. Actual suite plan may have minor variations from or be shown as a mirror image of the typical plan shown. All illustrations including but not limited to suite and amenity interiors, exteriors and views reflect the artist's interpretation of the project and do not take into account the neighbouring buildings, physical structures, streets and landscape. These matters will be governed entirely by the terms of the applicable disclosure documents and purchaser contract in each case. This is not an offering for sale any such offering can only be made with the applicable disclosure documents and offer to purchase and agreement of sale. The Concord Limited Partnership. E6QE